

DIAMOND C

TRAILERS



DUMP

MODELS: 43ED | 41ED | 46ED | 20WD
21WD | 24LPD | 25DOD | 23WFD





21WD



46ED

SEE THE DIFFERENCE.



23WFDT



41ED



21WD

DIAMOND C SERIES 

FEATURE HIGHLIGHTS

Common features found on Diamond C's Dump Trailers

Heavy Duty Gate, Door Latches and Hinges

Bulkhead for Tarp Mounting & Protection

Premium Power-up, Power-down
Hydraulic Pump

Convenient Drop-Leg, Heavy Duty Jacks
(optional on 43ED & 41ED)

Adjustable Coupler for
added functionality
(optional on 43ED & 41ED)

Structural Framing exceed
the industry norms
(frame, tongue & cross members)



Fleetneck Package Available



110v On-Board Battery Charger
wired-in for easy battery maintenance

All Rubber-Mounted LED Lights

Industry leading all 10 ga Body (43ED & 41ED are 12 ga)
or optional 7 ga Super Duty Body



Stake Pockets

Tarp Tie-Rail all the way around

Diamond Plate Fenders
with Teardrops for added durability.
*Optional 3/16" Tread-Plate
Super Duty Fenders Available*

New Premium Tires on Silver Mod Wheels

Fender Gussets Double as a Step

Professional Brand Hydraulic
Scissor Lifts or Cylinders



DEXTER AXLE

Genuine Dexter E-Z Lube Axles

Save time with on-the-go, quick lubrication.

For optimal tire wear and longevity,
we use only Cambered Axles.

Dexter, the Most Trusted Brand in the Industry



Industry Leading, Baked-On,
PPG Polyurethane Finish



Assurance

Buy With Confidence.

We stand behind our product.
Diamond C Trailers come with
a 3 year structure warranty.

***Industry Leading
Warranty.***

Questions? E-mail us at
warranty@diamondc.com

SPECS

Please contact your authorized Diamond C dealer for questions, additional options, or additional specifications.

For more info, visit us online at www.diamondc.com

LENGTH / WIDTH

GVWR

AXLES

BED CAPACITY

COUPLER

DOORS / GATES

HOIST

JACK

MAINFRAME

RAMPS

SIDE HEIGHT

FEATURED OPTIONS:



43ED

Single Axle General Duty



Length: 8', 10' Width: 60"

5,000 lb

5,200 lb, E-Z Lube, Electric Brake

2.2 to 2.8 yd[^]3

2" 7,000 lb Sleeve-Lock

Double Doors

Single Push Cylinder

2,000 lb Top-Wind

4" Channel

N/A

18"

SPARE TIRE & WHEEL

TARP SYSTEM

DIAMOND PLATE FENDERS



41ED

Tandem Axle General Duty



Length: 10' Width: 60", 77"

7,000 lb

2 - 3,500 lb E-Z Lube, Electric Brakes

2.8 to 3.6 yd[^]3

2" 7,000 lb Sleeve-Lock

Double Doors

Single Push Cylinder

7,000 lb Drop-Leg

4" Channel

Optional

18"

60" REAR SLIDE-IN RAMPS

TARP SYSTEM

SOLAR CHARGING SYSTEM



46ED

Medium Duty



Length: 10', 12' Width: 60", 77"

9,890 lb

2 - 5,200 lb E-Z Lube, Electric Brakes

2.2 to 4.3 yd[^]3

2-5/16" 12,500 lb Sleeve-Lock

Double Doors

Single Push Cylinder

7,000 lb Drop-Leg

5" Channel

Optional

24"

16" SIDE EXTENSIONS

TARP SYSTEM

HEAVY DUTY BODY PACKAGE



20WD

Commercal Grade Medium Duty



Length: 10', 12' Width: 82"

9,890 lb

2 - 5,200 lb E-Z Lube, Electric Brakes

5.1 to 6.1 yd[^]3

2-5/16" 15,000 lb Adjustable Cast

3-Way Gate

4" x 12" Scissor Lift

7,000 lb Drop-Leg

5" Channel

72" Rear Slide-In Ramps

24"

WIRELESS BED CONTROL

TARP SYSTEM

24" SIDE EXTENSIONS



21WD

Commercal Grade Heavy Duty



Length: 12', 14', 16' Width: 82"

14,900 - 24,000 lb

2 - 7,000 lb E-Z Lube, "Nev-R-Adjust" Electric Brakes

6.1 to 8.1 yd[^]3

2-5/16" 15,000 lb Adjustable Cast

3-Way Gate

6" x 15" Scissor Lift

7,000 lb Drop-Leg

6" Channel

72" Rear Slide-In

24"

GOOSENECK PACKAGE

SUPER DUTY 7 GAUGE BODY UPGRADE

DUAL HYDRAULIC JACKS



24LPD

Heavy Duty Low Profile



Length: 12', 14', 16' Width: 82"

14,900 - 24,000 lb

2 - 7,000 lb E-Z Lube, "Nev-R-Adjust" Electric Brakes

6.1 to 8.1 yd[^]3

2-5/16" 15,000 lb Adjustable Cast

3-Way Gate

6" x 15" Scissor Lift

7,000 lb Drop-Leg

8" x 10 lb I-Beam

72" Rear Slide-In

24"

GOOSENECK PACKAGE

SUPER DUTY 7 GAUGE BODY UPGRADE

24" SIDE EXTENSIONS

SPECS

Please contact your authorized Diamond C dealer for questions, additional options, or additional specifications.

For more info, visit us online at www.diamondc.com

LENGTH / WIDTH

GVWR

AXLES

BED CAPACITY

COUPLER

DOORS / GATES

HOIST

JACK

MAINFRAME

RAMPS

SIDE HEIGHT

FEATURED OPTIONS:



25DOD

Deck-Over Dump



Length: 12', 14', 16' Width: 96"

14,900 - 24,000 lb

2 - 7,000 lb E-Z Lube, "Nev-R-Adjust" Electric Brakes

10.6 to 14.2 yd³

2-5/16" 15,000 LB ADJUSTABLE CAST

3-Way Gate

6" x 15" Scissor Lift

7,000 lb Drop-Leg

8" x 10 lb I-Beam

78" Rear Slide-In

18" Fold-Down

24,000 LB GVWR PACKAGE

TARP SYSTEM

12,000 LB DROP-LEG JACK



23WFDT

Gooseneck Dual Tandem



Length: 14', 16', 18', 20' Width: 96"

25,000 - 30,000 lb

2 - 10,000 lb General Duty, Oil Bath

15.2 to 21.7 yd³

30,000 lb Bulldog BX1 (Round Adjustable)

Double Doors

6" x 28" Scissor Lift

2 - 12,000 lb Drop-Leg

12" x 19 lb I-Beam w/Bridge

90" Slide-In

44"

30,000 LB GVWR PACKAGE

TARP SYSTEM

GAS POWERED PACKAGE

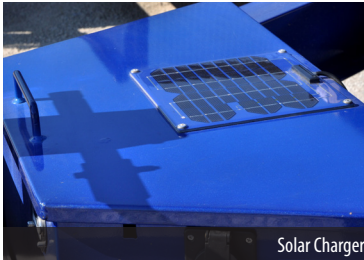


Side Extensions



Black Wheels

YOUR TRAILER, YOUR WAY



Standard Premium PPG Paint Colors
Custom colors available upon request.



Black



Grey



Silver



White



Mocha



Blue



Special

Road-tested PPG polyurethanes provide a long-lasting, rugged, and beautiful finish.





24LPD



46ED



21WD



21WD



41ED



DiamondC.com

© Diamond C Trailer Mfg., Road Clipper Enterprises. All illustrations and specifications contained in this brochure are based on the latest product information available at the time of printing. Specifications, standard features, options, components, and colors are subject to change without notice. Some features may be subject to availability, delays, or discontinuance. Trailers shown with optional equipment. Please contact your authorized Diamond C dealer for specifics.

Since the company began in 1985 as a small shop, its primary objective has been to progress the trailer industry through design innovations - improving the product and value that consumers deserve.

For over 30 years, Diamond C has maintained its standard of quality, while keeping our roots deep in traditional values and progressing with tomorrow's technology. Still family owned and operated, Diamond C designs, manufactures, and markets more than 50 diverse models of open flat-bed trailers.

We maintain our position as an industry leader, and promise only the best quality, value, and customer service. We challenge you, see the difference.

